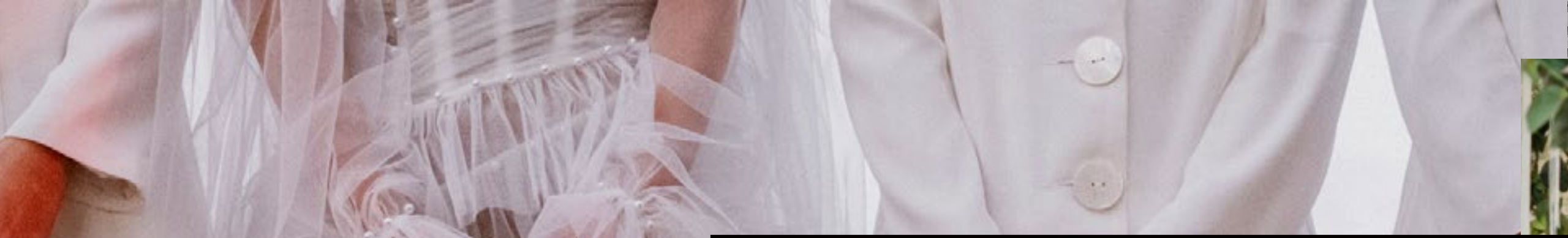


WELCOME TO

GLASSHOUSE



A modernist pavilion within Melbourne's
premiere sports and entertainment precinct.



The ultimate celebration





01

THE SPACES

02

THE FOOD

03

THE DRINKS

04

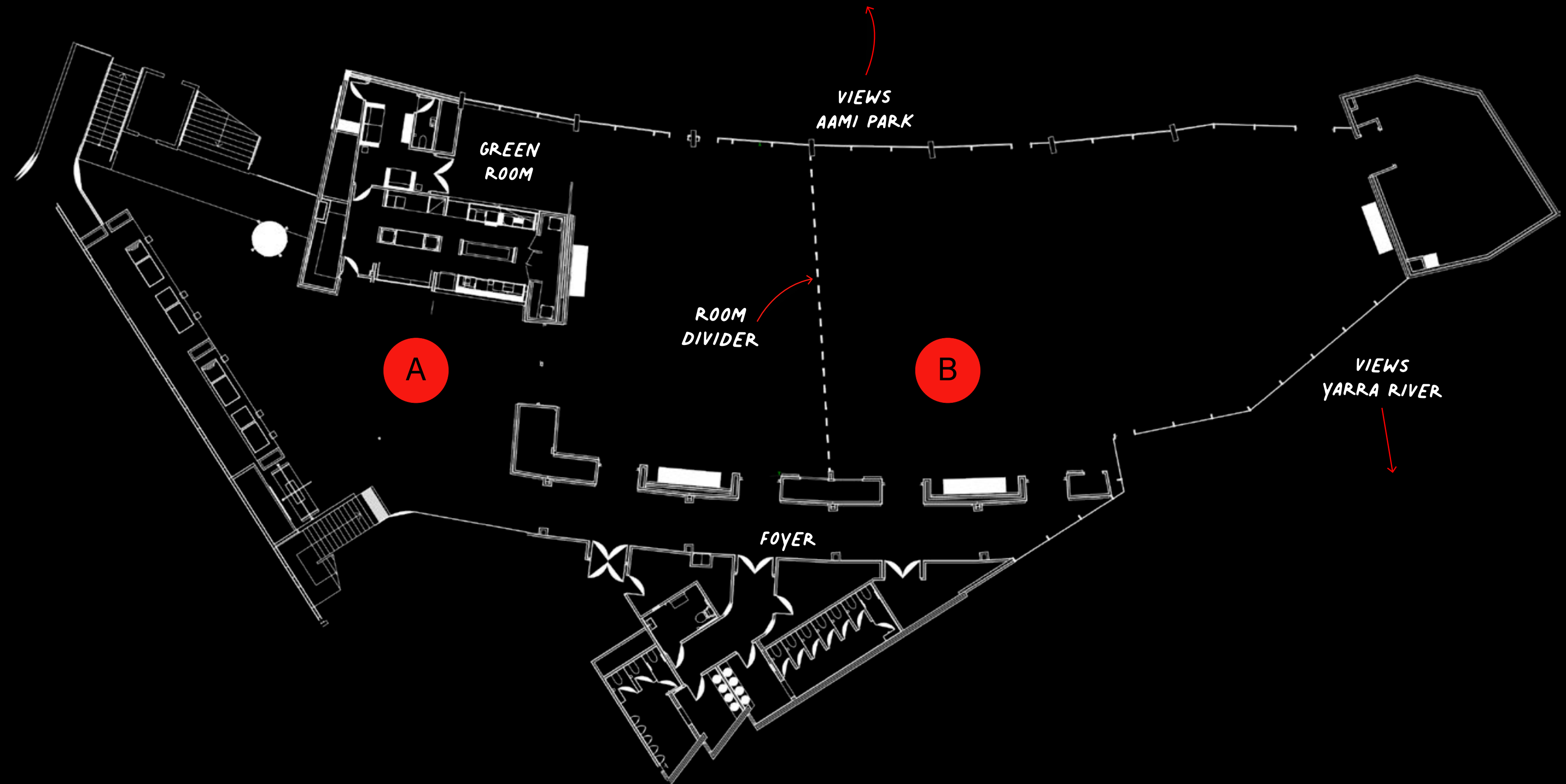
THE DETAILS

01

THE SPACES



Glasshouse *Floorplan*



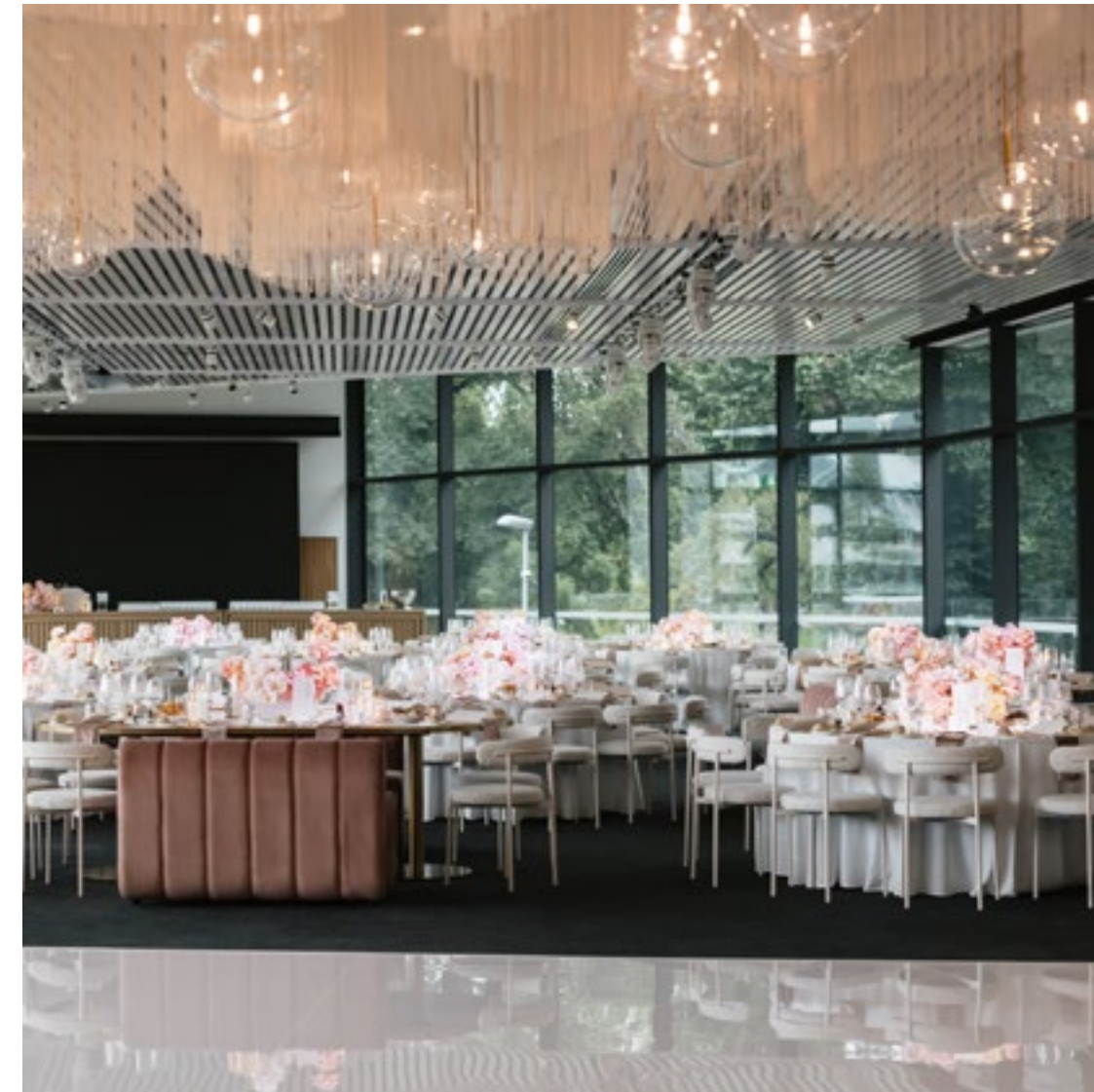
SPACES

A. Pre-Event Space

B. Event Space

The Spaces

Located on the banks of the Yarra and set in the heart of the famous Olympic Parks Precinct, Glasshouse offers a choice of magnificent event spaces to take full advantage of the stunning views across the Yarra River and surrounds. Boasting interior design by the world renowned architects Hecker Guthrie with beautiful finishes and fixtures, the latest in audio visual technology and exceptional event management and catering by The Big Group, Glasshouse is the perfect venue for sophisticated private and corporate events.



MAIN EVENT SPACE

A pillarless venue with views to the Yarra, Botanic Gardens and Melbourne Olympic Park, the terrace can accommodate stand-up style events for up to 1000 and seated events for 500.

Max Capacity: 1000



+ BALCONY

Enjoy the action of Melbourne's major sports precinct with a drink in hand on the balcony overlooking Olympic Park oval.

Max Capacity: 100



PRE-EVENT SPACE

The modern pre-event space suits pre-reception drinks and as a gathering area for guests to mingle before moving into the main space. Ideally situated at the building's front, it offers easy access via stairs or lift.

Max Capacity: 350

Pre-Event *Space*

With its contemporary design, the pre-event space can house a large reception desk and is suitable for breakout spaces, private meetings, or pre-dinner gatherings. Ideally situated at the building's front, it offers easy access via stairs or a lift to the first floor, ensuring smooth transitions for any event.



The Details

EVENT STYLE

Cocktail

CAPACITY

350 guests

PRICES

Included with
event space

FEATURES

Cloaking facilities

Main Event *Space*

On the banks of the Yarra River, in the heart of the famous Olympic Park precinct, Glasshouse offers the perfect setting host your next event.



The Details

EVENT STYLE

Cocktail
Seated

CAPACITY

Seated: 500
Seated,
dance floor: 450
Cocktail: 1000

FEATURES

Floor to ceiling glass
windows
Views of the Yarra
river and AAMI Park



THE BREAKDOWN

Event Space *Package*

<i>Venue Hire</i>	From \$3,500
<i>Winter (Jun-Aug)</i>	From \$2,800

Food

From seated banquet dinners to cocktail parties, we offer an array of delicious, seasonal menus to suit your event. Our menus are curated by our in-house chefs and hero local Australian produce.

Event Management & Staff

Our world class staff will add that extra personal touch to your event and ensure that everything runs smoothly from start to finish. Your event manager will be there every step of the way in the lead up to your event, with no detail left untouched.

Beverage Package

Our beverage list features an extensive range of local and internationally-acclaimed beverages, handpicked by our in-house sommelier. We offer various beverage package options for you to choose from.

Optional Extras

Glasshouse is a blank canvas for you to style and bring your vision to life. Ask our team about our optional extras or supplier guide of collaborators who can assist with all aspects of styling and creating.





THE BREAKDOWN

Event Space Package *Inclusions*

Furniture Inclusions

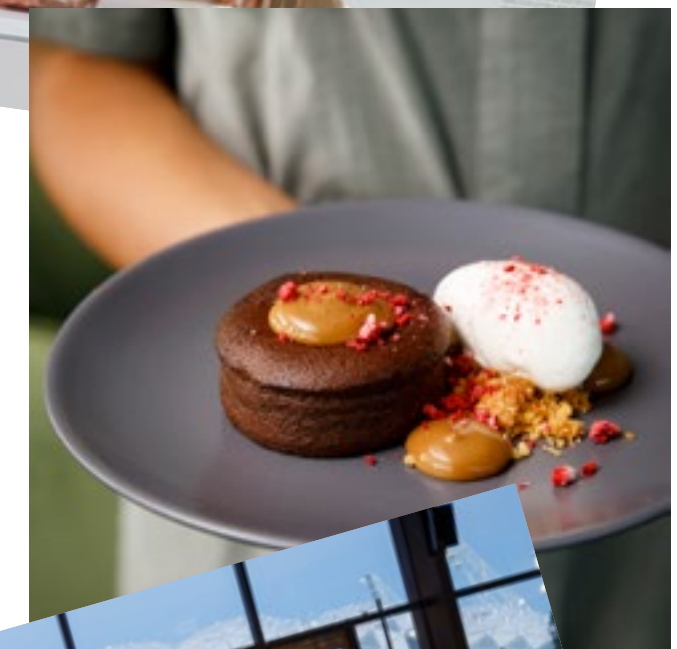
- 2m x 1.5m black stage
- High bar tables and stools
- Existing décor and lounge furniture in foyer-
- 1.8m round tables
- 1.6m x 1.2m rectangular tables
- Wooden credenzas

Accessories Inclusions

- Custom made lectern with microphone (*sound system and technician on site additional charge*)
- Taupe weave or black weave linen
- White napkins
- Electronic seating chart
- Glass votives with tea light candles
- Table centrepieces with marble basics tray

Bump In & Out Inclusions

- Two hour bump in prior to your event start time
- One hour bump out on conclusion of the event
- Access to green room with ensuite bathroom
- Access to cloaking facilities



02



THE FOOD



Plated *Dining*

2026 | \$230.00pp

2027 | \$235.00pp

2028 | \$240.00pp

Inclusive of the following:

- Five hour duration
- Three canapes on arrival
- Single Plated entrée
- Alternate main course
- Seasonal fresh mixed leaves, radish and French mustard salad
- Two roaming dessert canapes
- Five hour Classic Beverage Package
- Your wedding cake is cut and served on platters
- Tea, coffee and homemade treats
- Menu tasting for the couple



Shared *Dining*

2026 | \$243.00pp

2027 | \$251.00pp

2028 | \$260.00pp

Inclusive of the following:

- Five hour duration
- Two canapes on arrival
- Two shared entree dishes
- Three shared main dishes
- Two side dishes
- Two roaming dessert canapes
- Your wedding cake is cut and served on platters
- Five hour Classic Beverage Package
- Tea, coffee and homemade treats
- Menu tasting for the couple



Sunday Wedding

*Based on minimum of 150 adults
and a selective menu*

2026 | \$220.00pp

2027 | \$227.00pp

2028 | \$234.00pp

Inclusive of the following:

- Five hour duration
- Three canapes on arrival
- Seasonal dip and sourdough board (two per table)
- Plated entree
- Alternate main course
- Seasonal fresh mixed leaves, radish and French mustard Salad
- Two roaming dessert canapes
- One complimentary supper item
- Five hour Classic Beverage Package
- Your wedding cake cut and served on platters
- Tea, coffee and homemade treats
- Menu tasting for the couple



Winter Wedding

*Based on minimum of 150 adults
and a selective menu*

2026 | \$198.00pp

2027 | \$204.00pp

2028 | \$210.00pp

Inclusive of the following:

- Five hour duration
- Three canapes on arrival
- A cocktail served on arrival
- Seasonal dip and sourdough board (2 per table)
- Alternate entree
- Alternate main course
- Seasonal fresh mixed leaves, radish and French mustard Salad
- Two roaming dessert canapes
- Five hour Classic Beverage Package
- Your wedding cake cut and served on platters
- Tea, coffee and homemade treats
- Menu tasting for the couple



Cocktail *Wedding*

2026 | \$200.00pp

2027 | \$205.00pp

2028 | \$210.00pp

Inclusive of the following:

- Eight canapes
- Two bowl items
- Two roaming dessert canapes
- Two supper items
- Your wedding cake is cut and served to roam to your guests
- Five hour Classic Beverage Package
- Tea, coffee and homemade treats



Indian *Wedding*

2026 | \$235.00pp

2027 | \$245.00pp

2028 | \$255.00pp

Inclusive of the following:

- Five hour duration
- Five hour soft drinks package
- Chef's selection of three canapes on arrival
- Three shared entree dishes
- Three shared main dishes (two protein, one vegetarian)
- Mains accompanied by rice and bread
- Two roaming dessert canapes

**Please note this does not include an alcoholic beverage package.*

Menu *Additions*

Dips and cured meats boards
From \$4.00 per person

Antipasto board
From \$15.00 per person

Pasta
From \$27.00 per person for first entree, or no charge for replacing entree

An additional selection of entrée or dessert to be served alternately
\$8.00 per person per course

Individual plates of assorted cheeses and fresh fruit
\$14.00 per person

Food stations
From \$24.00 per person with savoury and sweet options

Children's meals (4-12 years old)
\$55.00 per child (3 courses)

Band and crew meals
\$70.00 per member (including refreshments)





Special Meal Requirements + *Allergies*

Our menus have been designed to provide suitable alternative options for vegetarian, vegan, gluten free/coeliac, dairy free/lactose free and nut free guests at no additional charge.

Guests who have other specific requirements e.g. fructose free, no garlic, paleo diet, etc; will incur an additional dietary fee of \$30.00 per person as our chefs will prepare a special meal for each of these guests.

Any special dietary requirements are to be advised no later than seven (7) business days prior to the function date, special requests may not be accommodated after this time. The Big Group cannot guarantee an allergen free environment in our kitchens and the products we supply. Gluten, peanuts, tree nuts, eggs, milk, wheat, fish, shellfish, and other potential allergens may be present in the food and beverages we supply.

03

THE DRINKS



Classic *Beverage Package*

Sparkling

NV Sparkling, Tatachilla, Multi Regional

White Wine

Sauvignon Blanc Semillon, Hartogs Plate, Western Australia

Red Wine

Cabernet Merlot, Hartogs Plate, Western Australia

Beer

Carlton Draught

Non-alcoholic

Altina La Vie En Rose Sparkling Rose with Rosella & Hibiscus

Asahi Zero

Orange and Apple juice

Coke, Coke No Sugar, Lemonade, Squash

Still Water

**Please contact our team for more information on upgrades from the Classic to our Signature Beverage Package or Indulge Beverage Package.*



Spirits

Spirits Package

\$25.00 per person, up to a 5 hour event duration

All of the following six base spirits are available to be added to your beverage package.

- Absolut Vodka
- Beefeater Gin
- Havana 3 Year Old Rum
- Olemeca Blanco Tequila
- Chivas Regal 12 Year Old Blended Malt Whiskey
- Bulleit Bourbon

Spirits will be served from the venue bar, table service is not available with this offer. We will supply the mixers for the spirits, glassware and garnish as required.



Spirits

Premium Spirits Package

\$35.00 per person, up to a 5 hour event duration

All of the following six base spirits are available to be added to your beverage package:

- Grey Goose Vodka
- Tanqueray No. 10 Gin
- Don Julio Blanco Tequila
- Glenlivet 12 Year Old Single Malt Whisky
- Ron Zacapa Cenenario 23
- Woodford Reserve Bourbon
- Soda, tonic, dry ginger, lemons, limes

Spirits will be served from the venue bar, table service is not available with this offer. We will supply the mixers for the spirits, glassware and garnish as required.



Spirits

Spirits Corkage

\$15.00 per person, up to a 5 hour event duration

You are welcome to provide your own spirits, with a maximum bottle limit of one bottle per five guests.

These are to be served from the venue bar, table service is not available with this offer. We will supply the mixers for the spirits, glassware and the garnish as required.



Beverage *Upgrades*

Champagne Towers

84 glasses included

Tatchilla Sparkling NV \$630.00

Cavaliere D'Oro Prosecco NV \$765.00

Croser Sparkling NV \$810.00

Bellini Peach Prosecco \$885.00

Clover Hill Cuvee NV \$920.00

Mumm Grand Cordon Brut NV \$2200.00

Champagne Bottles

Bottles are charged on consumption when a full beverage package has been confirmed

Mumm Grand Cordon, NV Champagne 750ml \$82.00

Laurent Perrier La Cuvee Champagne NV 750ml \$92.00



Beverage *Upgrades*

Beer Upgrade

\$2.50 per person

Your choice of two varieties from the following list to replace the heavy strength beer:

- Asahi
- Peroni Nastro Azzurro
- Coopers Pale Ale
- Corona
- Stone & Wood Pacific Ale

Cocktail Upgrade

From \$11.00 - \$13.00 per person

If you wish to offer cocktails at your event, please ask your event manager for the cocktail list.



Event *Extensions*

Events may be extended for an additional fee.
Time extensions will be based on the confirmed total
guest numbers.

Classic Beverage Package
\$8.00 per person per half hour

Signature Beverage Package
\$13.00 per person per half hour

Indulge Beverage Package
\$18.00 per person per half hour

Spirits Package Extension
\$5.00 per person per half hour
In conjunction with a beverage package extension

Non-Alcoholic Package Extension
\$8.00 per person per half hour

Time Only Extension
(no food or beverage service)
\$5.00 per person per half hour



04

THE DETAILS



THE BREAKDOWN

*Extra Details***AV, Sound, Staging and Lighting**

Harry the Hirer are our preferred in-house audio visual supplier at Glasshouse delivering superior audio visual services, technology and coordination solutions to our client's for their events. An audio visual technician will be required during your event to manage the in house equipment.

We encourage you to speak directly with an experienced member of Harry The Hirer productions regarding options for audio visual or lighting solutions to enhance your event. We would be most happy to put you in contact with our account manager.

Parking

Please speak to our Event Managers regarding parking options. The Eastern Plaza Carpark via entrance D on Olympic Boulevard (which is across the road from Glasshouse) is open for Public Parking. Parking is subject to space available and subject to the fee set by Melbourne & Olympic Parks. This is normally \$7.50. We strongly recommend you pre book parking to avoid disappointment. <https://prebook.mopt.vic.gov.au/>

Alternatively, you may prefer to use the very reasonably priced metered parking on Alexandra Avenue and make the short walk over Swan Street bridge.

Public Transport

Glasshouse is a 10 minute walk from Richmond station and 16 minute walk from Jolimont station. It is also a 5 minute walk to Stop 7 –John Cain Arena for the Route 70 tram.

Dance Floor

Quotation upon request

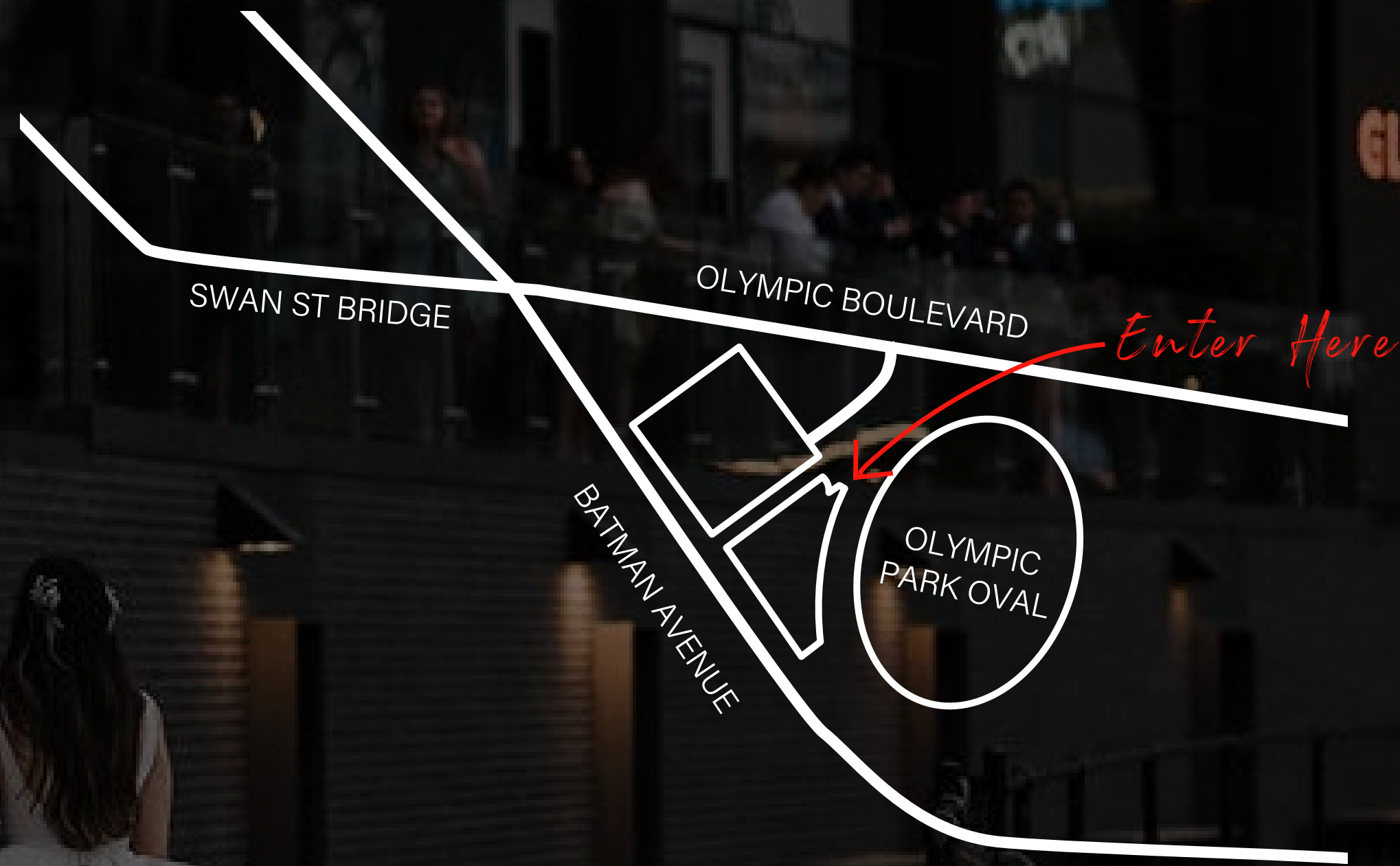
An 8m x 8m dancefloor is included. If you wish for a custom dancefloor, we work with numerous dance floor suppliers and would be happy to send across their details

Security

A minimum of one security guard is required for every event with The Big Group. The security guard must be onsite at the venue 30 minutes prior to guest arrival and remain for 30 minutes after guest departure.

Please be aware that final guest numbers and the nature of the event may require additional security personnel.





GLASSHOUSE

Olympic Park Oval, Olympic Blvd,
Melbourne VIC 3001

Our other *Venues*



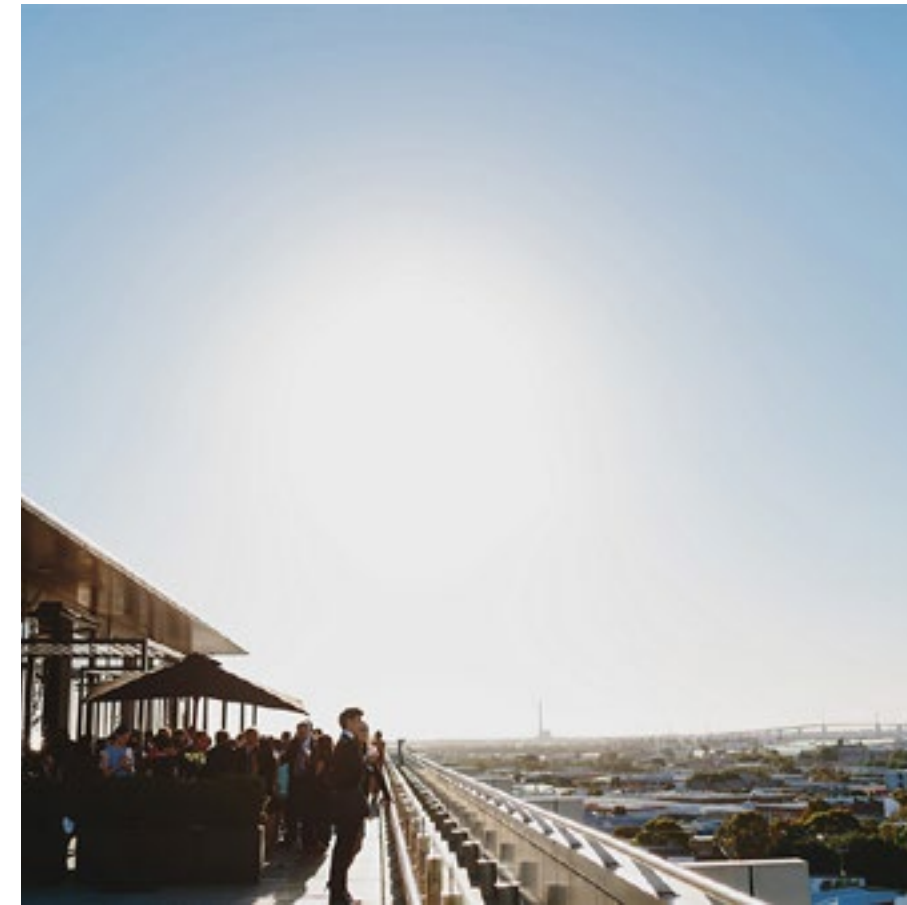
ORMOND HOUSE

Located on the edge of Melbourne CBD, Ormond House is a grand mansion set within impeccable grounds that play host to endless garden parties. Featuring a large ballroom, characterful bars, pavilions, and its own chapel.



STATE LIBRARY VICTORIA

Australia's most historic public library, State Library Victoria offers a choice of iconic spaces for your special event — from wedding celebrations and intimate cocktail functions to conferences and end of year parties.



LUMINARE

This chic venue boasts a sweeping outdoor deck and floor-to-ceiling windows, resembling garage doors, that open onto the terrace.



ILUMINA

Situated in a prime spot with sweeping views of Sydney's vibrant streets, Ilumina boasts a stunning double-height event room. This flexible space can be tailored to various event sizes and styles, ensuring each event is memorable. Enhanced by spacious arrival, breakout, and multi-purpose zones, the venue maximises versatility.



MUSEUM OF CONTEMPORARY ART SYDNEY

Experience breathtaking views of Sydney harbour and its iconic landmarks at this heritage-listed property, with various options and event spaces tailored towards your dream event. is memorable. Enhanced by spacious arrival, breakout, and multi-purpose zones, the venue maximises versatility.

Let's get in touch!

CONTACT US ↓

enquiries@thebiggroup.com.au

thebiggroup.com.au