

An aerial night view of the Melbourne skyline, featuring numerous illuminated skyscrapers and city buildings. The image is split into two main sections by a dark red horizontal band. The top section shows a dense cluster of high-rise buildings, while the bottom section shows a wider view of the city, including the Yarra River and the Melbourne Central clock tower.

RYDGES

MELBOURNE

CONFERENCE & EVENTS

REFRESHINGLY LOCAL

RYDGES.COM



MORE EVENTS ON EVERY LEVEL

Rydges Melbourne is one of the city's largest and most versatile event venues - awarded "Best Meeting and Events Space 2024" at the Accommodation Awards for Excellence, and ranked in the [Cvent Top Meeting Hotels Asia Pacific 2025](#), placing Top 10 in Australia and No.1 in Victoria.

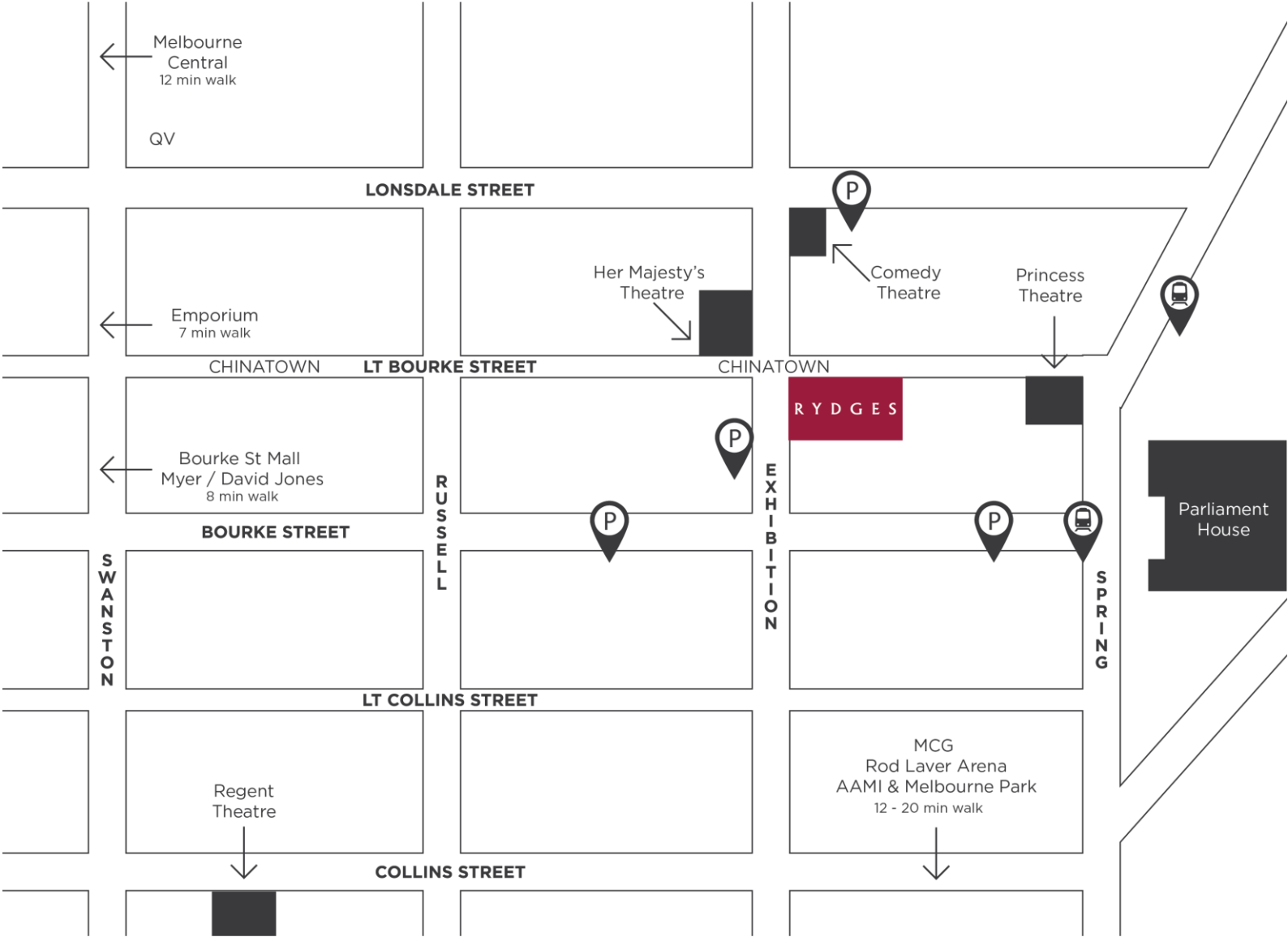
Spanning 1500sqm across two levels, Rydges Melbourne features 11 versatile spaces including the state-of-the-art Centre Stage ballroom, perfect for elegant weddings or memorable galas, light filled Meeting Place and an expansive Bossley Rooftop overlooking Her Majesty's Theatre.

Events are elevated with refreshingly local menus to enhance all occasions. Indulge in healthy day delegate packages or feast on elegant banquets featuring local produce, paired with an Australian led beverage list.

Offering 370 rooms & suites that are inspired by the Australian landscape. Enjoy a streamlined check-in, in-room connectivity, an interactive fitness studio, outdoor heated rooftop pool, and Bossley Bar & Restaurant.

Chat to our team of event experts to start planning your next event.

LOCATION



CENTRE STAGE

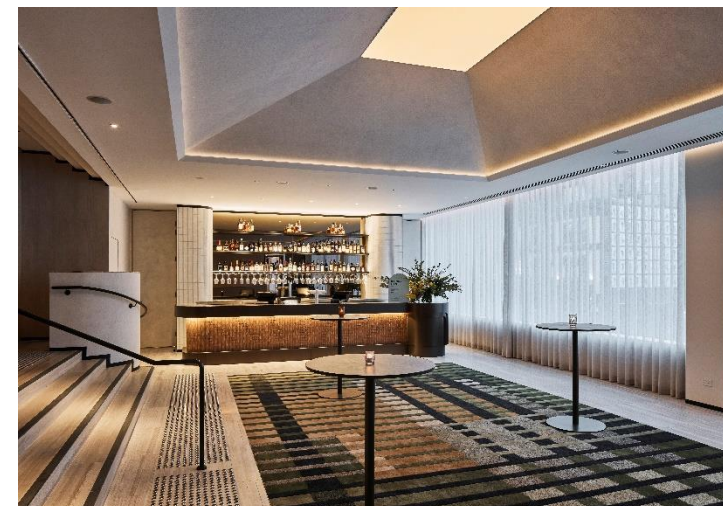
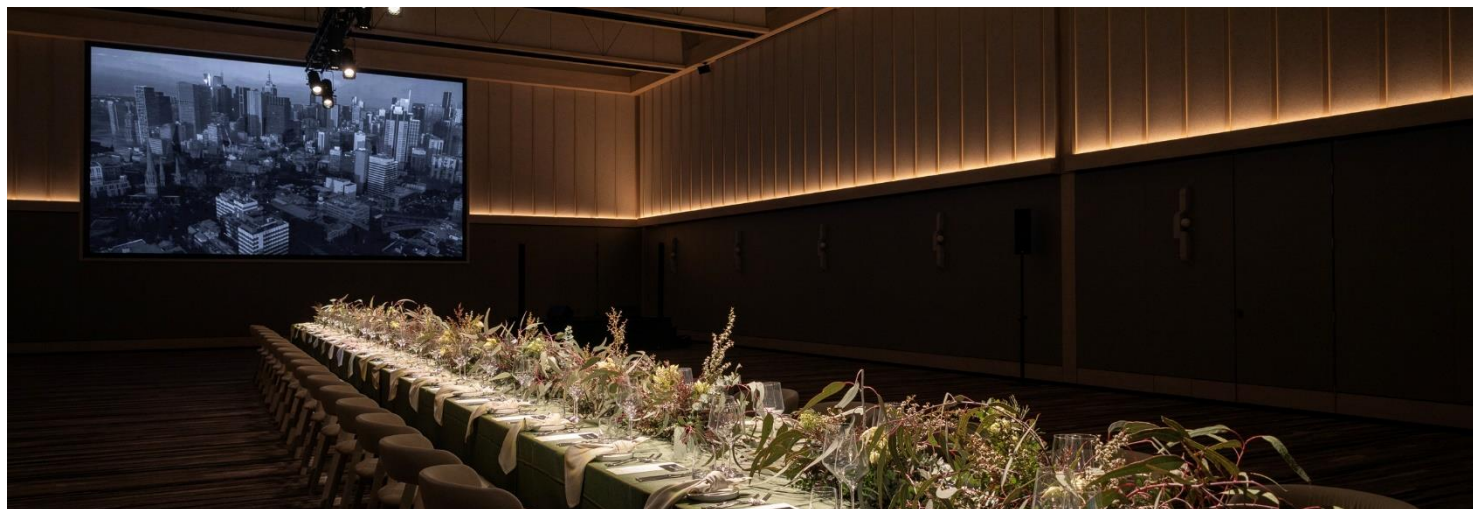
 150 – 250 Seated | 500 Cocktail

Whether you're planning a gala dinner, launch, conference or wedding – our largest event space is perfect for when you want to take Centre Stage. From the moment your guests arrive, impress with stunning views of Exhibition Street and Her Majesty's Theatre from the exclusive pre-function bar.

With its breathtaking vaulted ceilings, Centre Stage can accommodate up to 250 seated guests or 500 for a cocktail style event within the main ballroom.

Features

- 7m high vaulted ceilings
- 7x4 metres LED screen
- Exclusive pre-function bar



MEETING PLACE

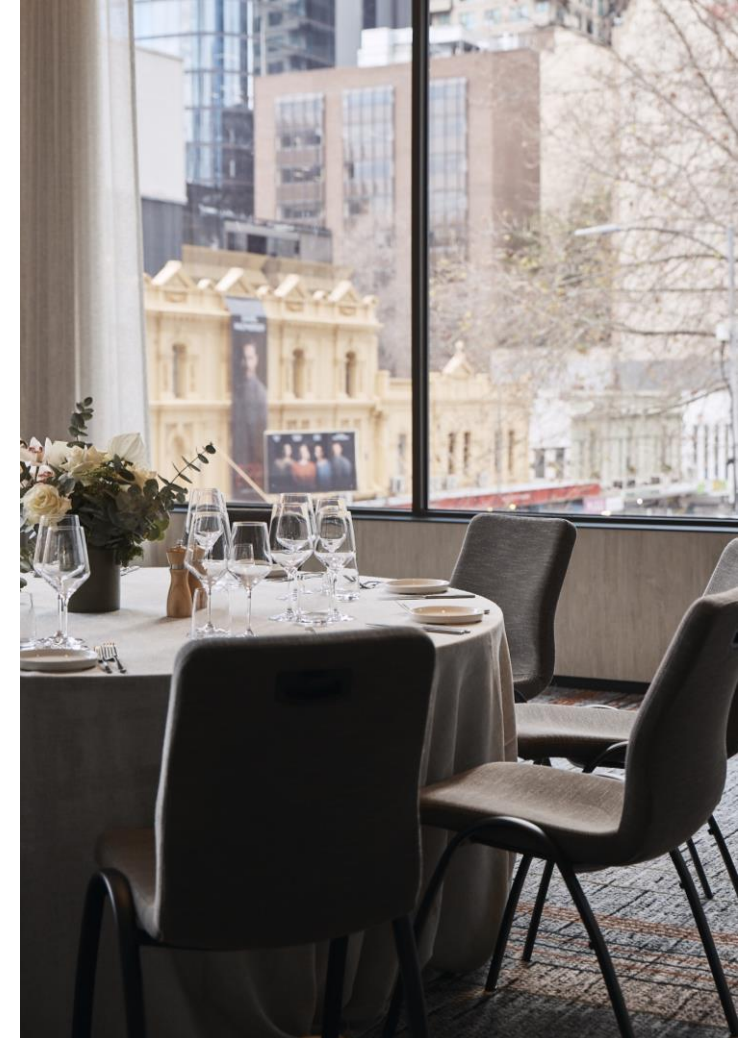
 50 – 220 Seated | 300 Cocktail

With an abundance of natural light, and overlooking Her Majesty's Theatre, the Meeting Place can host up to 300 guests cocktail or theatre and 220 seated. Meeting Place is fitted with divider walls with the ability to create four private function rooms for any configuration of your choice.

Whether you're hosting a dinner, cocktail party, exhibition or delivering a presentation — the picturesque windows allow abundant natural light and offer a view of Melbourne's theatre precinct and the gateway to Chinatown, the quintessential Melbourne setting.

Features

- 5 x 160 inch retractable built-in HD LED projector screen
- Built-in surround sound
- Divider walls to create four separate venues and multiple configurations
- Complimentary Wi-Fi
- Tailored menus using seasonal and local produce



BOSSLEY ROOFTOP

 80 Seated | 250 Cocktail

With stunning views of Her Majesty's Theatre and the city skyline, this versatile venue seamlessly combines the Bossley Rooftop and Terrace Rooms to create an expansive indoor-outdoor space.

Perfect for celebrations of up to 250 guests, it features lounge seating, an indoor dance floor, and awnings with heating for those cooler Melbourne nights. Surrounded by lush greenery, the space is as captivating by day as it is breathtaking by night.

Whether you're planning a milestone celebration, a corporate event, or your dream wedding under the sun or stars — Bossley Rooftop is the perfect city backdrop to elevate any occasion.

Features

- Private bar
- Cocktail furniture, table, chairs & lounges
- Sun umbrellas
- Retractable awnings
- Outdoor heating



TERRACE ROOMS

 100 Seated | 130 Cocktail

Bathed in natural light and framed by floor-to-ceiling windows, the Terrace Rooms offer a flexible, modern setting in the heart of Melbourne. Perfect for meeting rooms, private dinners or cocktail events, the space can be styled to suit any occasion — from intimate gatherings to larger-scale functions. Each room is equipped with 75-inch LCD screens, ideal for presentations, digital displays or immersive content.

Surrounded by greenery and the buzz of the city below, you can elevate your event even further by expanding into the Bossley Rooftop — a breezy open-air oasis featuring lounge seating, lush planter boxes, ambient lighting, and full-length awnings to keep guests comfortable day or night.

Features

- Divider walls to create up to three private function rooms
- 3 x 75-inch LCD screens
- Floor-to-ceiling windows
- Natural light and contemporary finishes
- Direct access to Bossley Rooftop



BOSSLEY PRIVATE DINING

Whether it's for wining or dining, business dinners or big birthdays, working lunches or intimate weddings, anything goes at Bossley. No matter what, you'll feel right at home – and so will your guests.

With two private dining rooms that can be used separately or combined for when bigger is better, Bossley Private Dining offers:

- Start at Lt Bossley's dedicated entrance, where you can usher your guests to a communal table for 14 guests
- Private entrance and bar
- Larger Private Dining Room surrounded by floor-to-ceiling wine cellars for 44 guests
- Presentation-ready TV
- For larger celebrations, Bossley Bar & Restaurant is available for exclusive hire. Chat to our team for more information



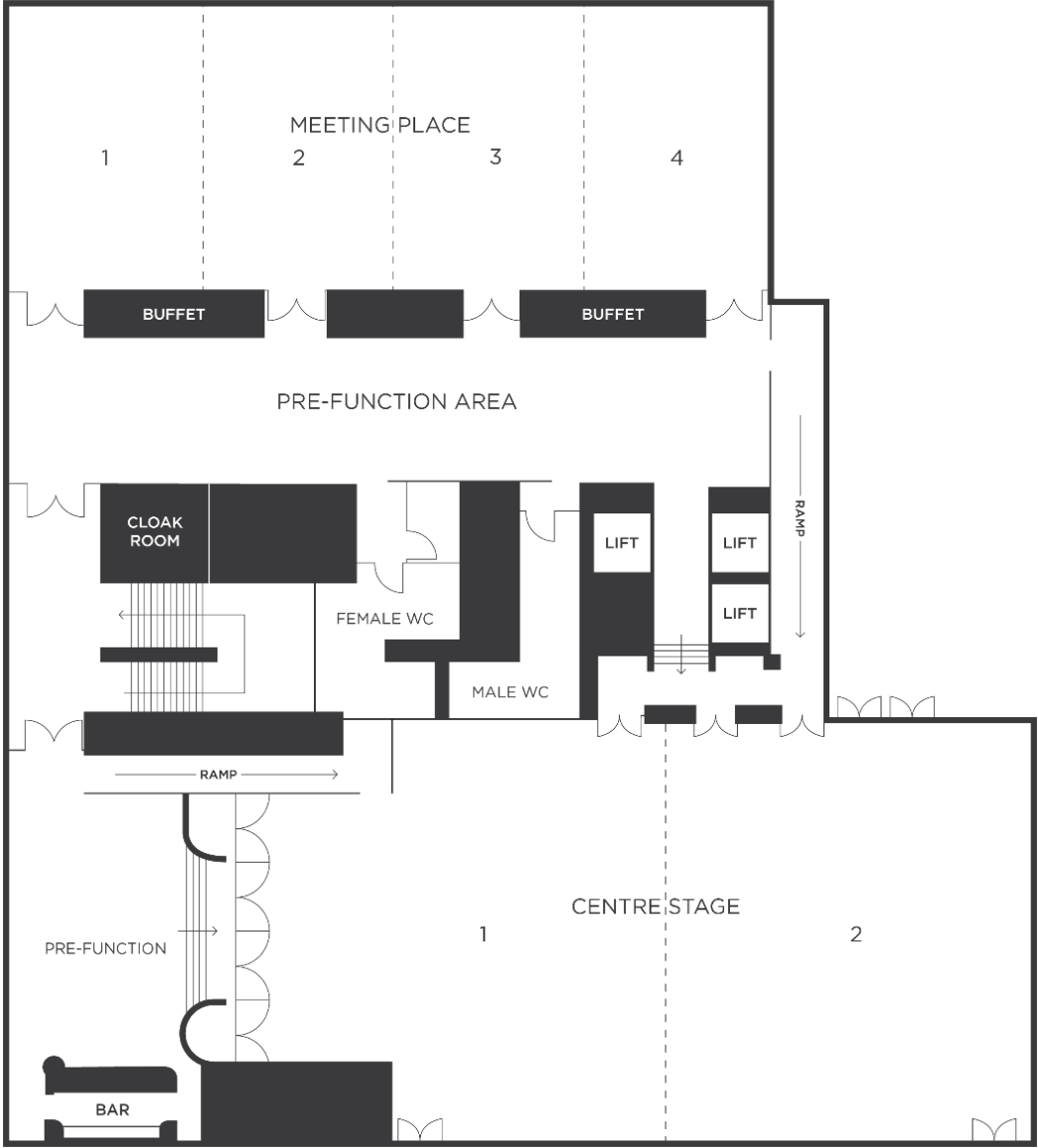
CAPACITIES

Centre Stage				Meeting Place							Terrace Room					Bossley	
	CENTRE STAGE	CENTRE STAGE 1	CENTRE STAGE 2	MEETING PLACE	MEETING PLACE 1	MEETING PLACE 2	MEETING PLACE 3	MEETING PLACE 4	MP 1&2, 2&3, 3&4	MP 1,2&3 OR 2,3&4	TERRACE ROOMS	TERRACE ROOM 1	TERRACE ROOM 2	TERRACE ROOM 3	TERRACE ROOM 1&2	BOSSLEY ROOFTOP EXCLUSIVE	BOSSLEY PDR
	LEVEL 1			LEVEL 1							LEVEL 2					LEVEL 2	GROUND
AREA M²	495	-	-	332	83	83	83	83	166	249	143	57	43	43	100	460	-
THEATRE	500	189	204	286	84	84	84	84	144	216	-	28	24	24	70	-	-
CLASSROOM	162	60	78	120	30	30	30	30	60	90	-	15	15	15	30	-	-
U-SHAPE	50	28	30	38	20	20	20	20	24	30	-	16	13	13	-	-	-
CABARET	248	104	120	176	40	40	40	40	88	136	-	21	14	14	35	-	-
BOARDROOM	54	20	20	54	16	16	16	16	-	-	-	10	10	10	20	-	-
BANQUET	300	120	140	220	50	50	50	50	100	150	-	24	16	16	40	-	44
BANQUET W/ DANCEFLOOR	250	-	-	160	-	-	-	-	-	-	-	-	-	-	-	-	-
COCKTAIL	500	250	250	300	75	75	75	75	150	225	130	50	40	40	60	250	70
EXHIBITION	33	*	*	22	*	*	*	*	*	*	-	-	-	-	-	-	-

* Discuss with our Sales Team for the best exhibition configuration

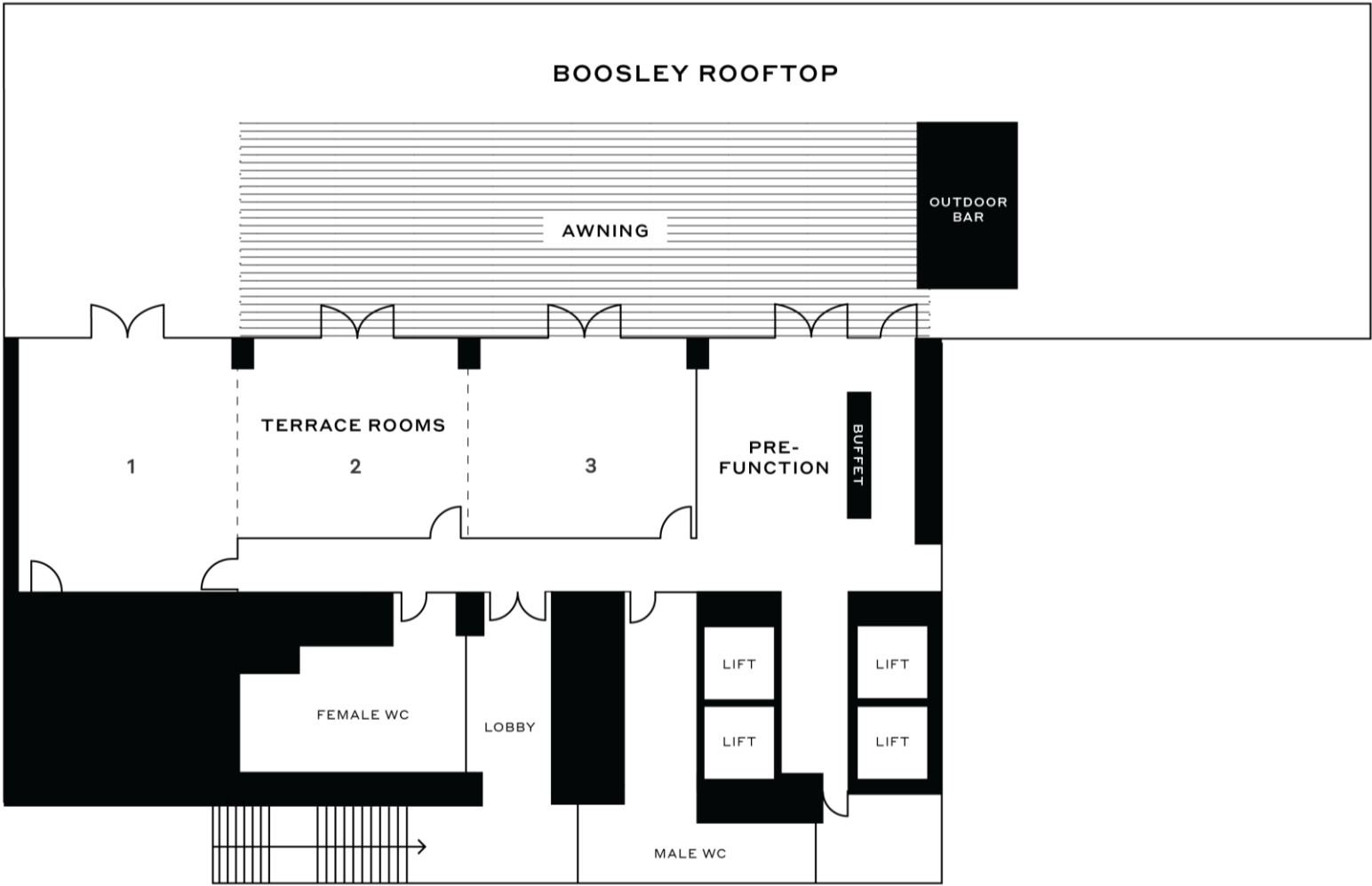
FLOORPLAN

Centre Stage & Meeting Place



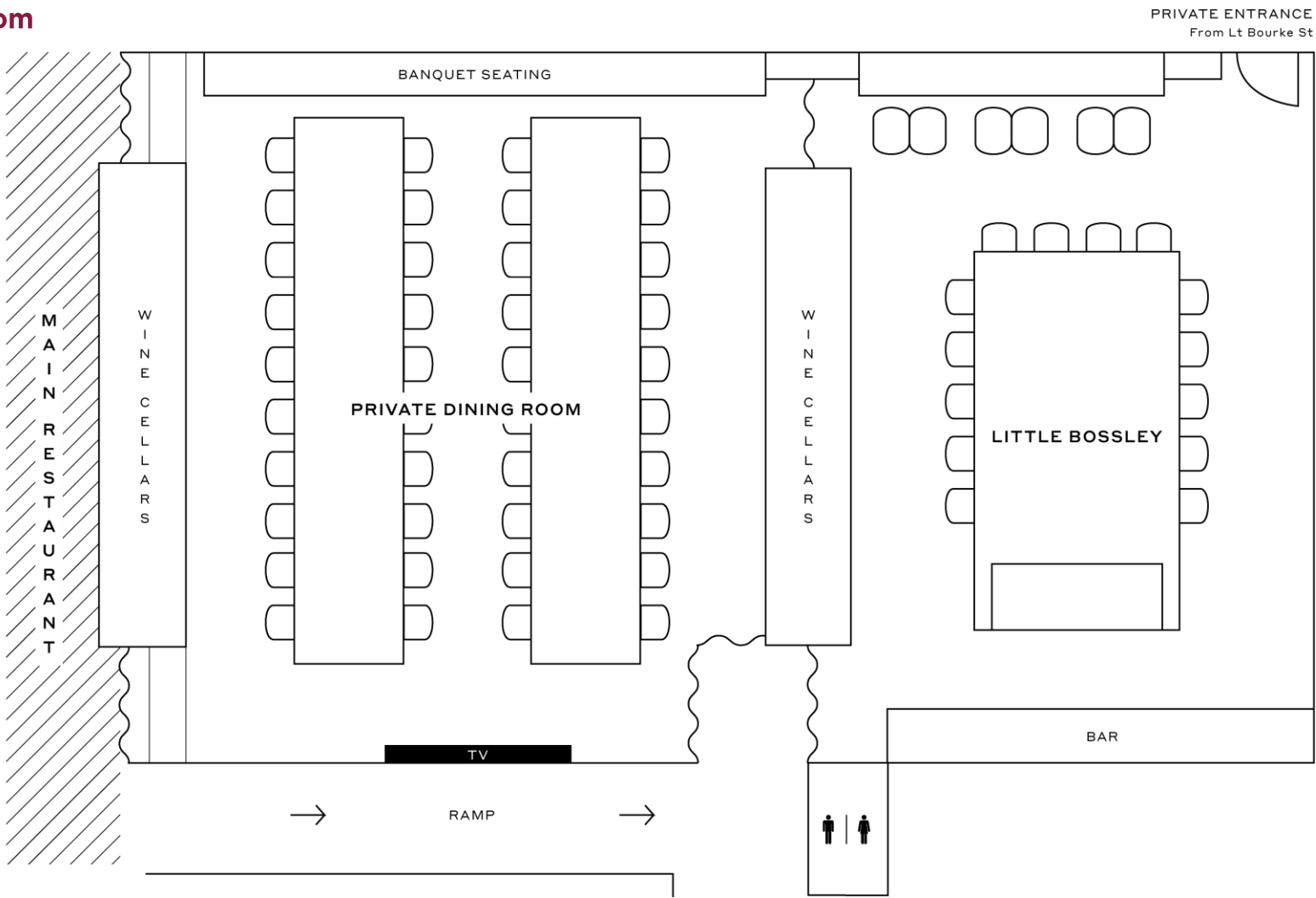
FLOORPLAN

Bossley Rooftop & Terrace Rooms



FLOORPLAN

Bossley Private Dining Room



A NEW RYDGES HOTEL EXPERIENCE

Refreshingly local in design, the modern rooms create a welcoming and serene environment inspired by the Australian landscape, offering two different accommodation types including king rooms and suites.

Rydges Melbourne features a streamlined check-in, in-room connectivity, interactive fitness studio, outdoor heated rooftop pool and Bossley Bar & Restaurant.

Hotel Features

- Conveniently located in the heart of Melbourne CBD – theatre district, iconic dining, Chinatown, exclusive Collins St boutiques, major sporting precincts and entertainment at your doorstep
- 370 guest King Rooms and Suites
- Seamless and connected check-in experience
- Heated outdoor pool on the rooftop
- Interactive fitness studio and outdoor terrace
- Bossley Bar & Restaurant
- 24 hour in-room dining
- Working spaces in the lobby
- Complimentary high-speed Wi-Fi





RYDGES

HOTELS · RESORTS

RYDGES MELBOURNE

186 Exhibition Street,
Melbourne, VIC 3000

ENQUIRIES

+61 3 9635 1286

functions_rydgesmelbourne@evt.com

REFRESHINGLY LOCAL

[RYDGES.COM](https://rydges.com)